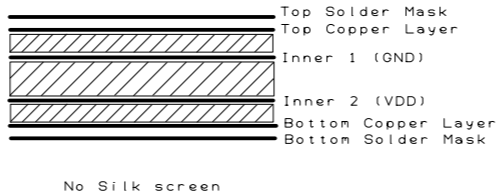


2 plated oblong holes  
1.4 x 0.4 mm  
plus  
2 plated oblong holes  
1.1 x 0.4 mm  
9 times



Drill	Plated	Size	Shape	ID
0.400	Y	1.000	Cross	D
0.800	Y	1.000	Triangle	E
0.600	Y	1.000	Round	F
1.700	Y	2.000	Plus	I
0.700	Y	1.000	Square	J
0.900	Y	1.000	Octagon	K
3.200	Y	2.000	Square	M
0.300	Y	1.000	Plus	N
1.000	Y	1.000	Diamond	O
2.300	Y	2.000	Round	P
2.200		2.000	Cross	Q

Some are not holes but oblong holes with 0.4mm width

Some are not holes but oblong holes with 0.9mm width

